

# LW1800

3D FIBER LASER WELDING ROBOT



## FANUC ROBOT ARMS

### Machine Advantage

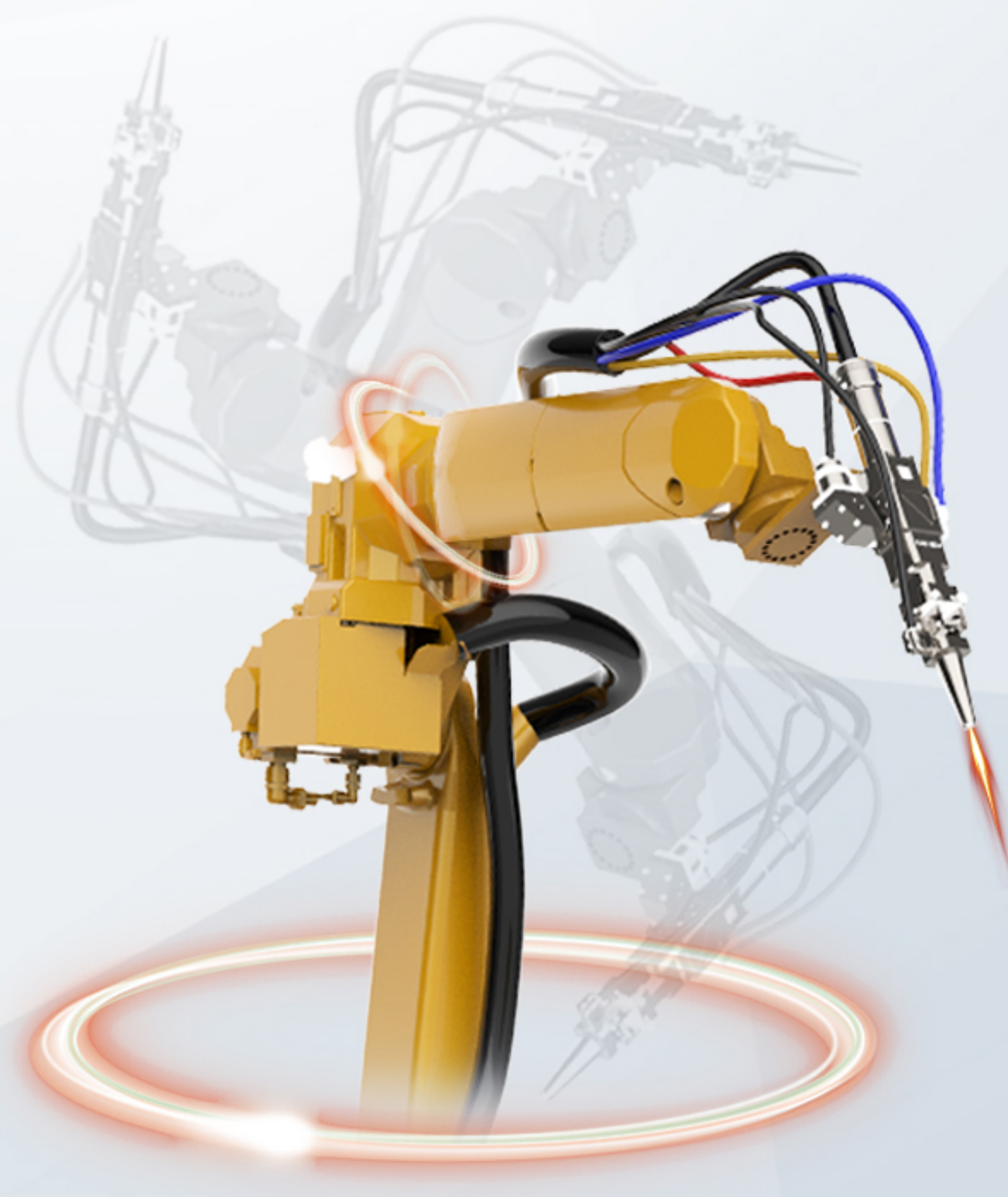


#### Welding quality

Stable welding quality, high precision, small deformation, high penetration, no weld penetration.

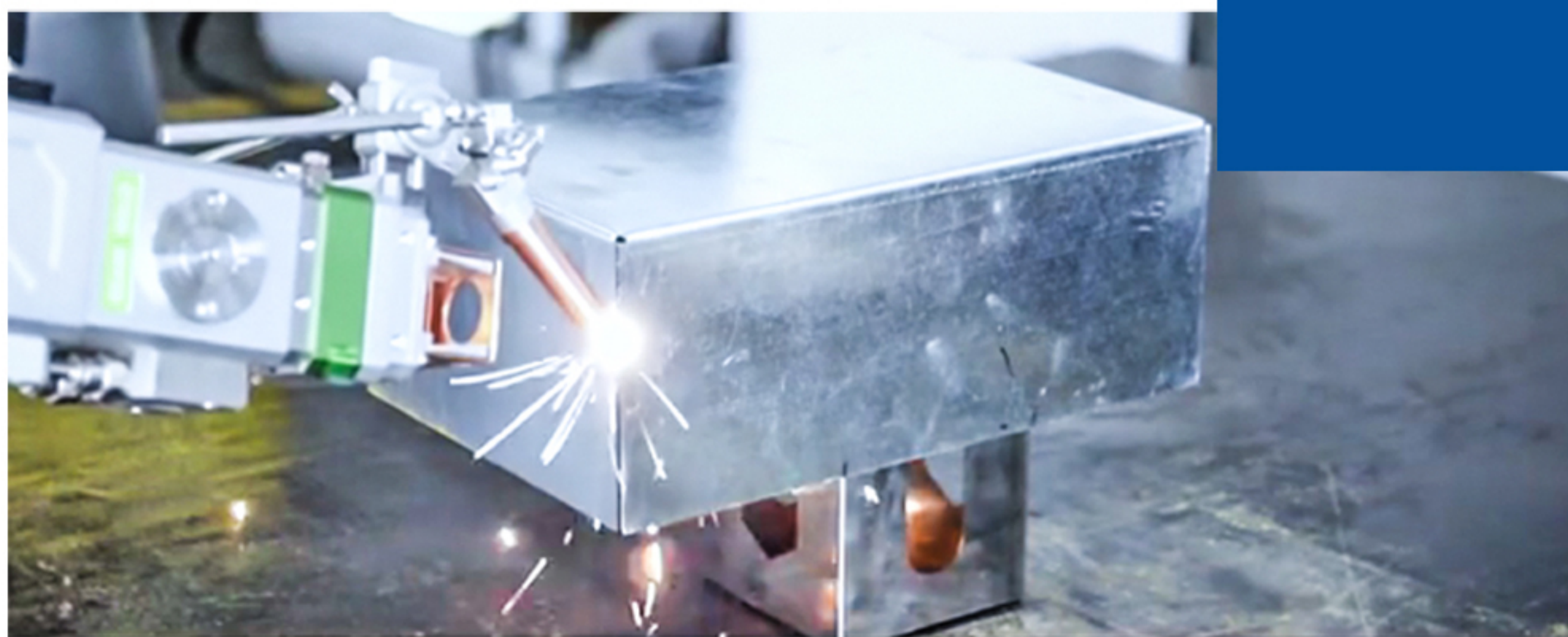
#### Intelligent operation

Intelligent operation, flexible and reliable, six-axis linkage, welding in any space, not limited to plane welding;



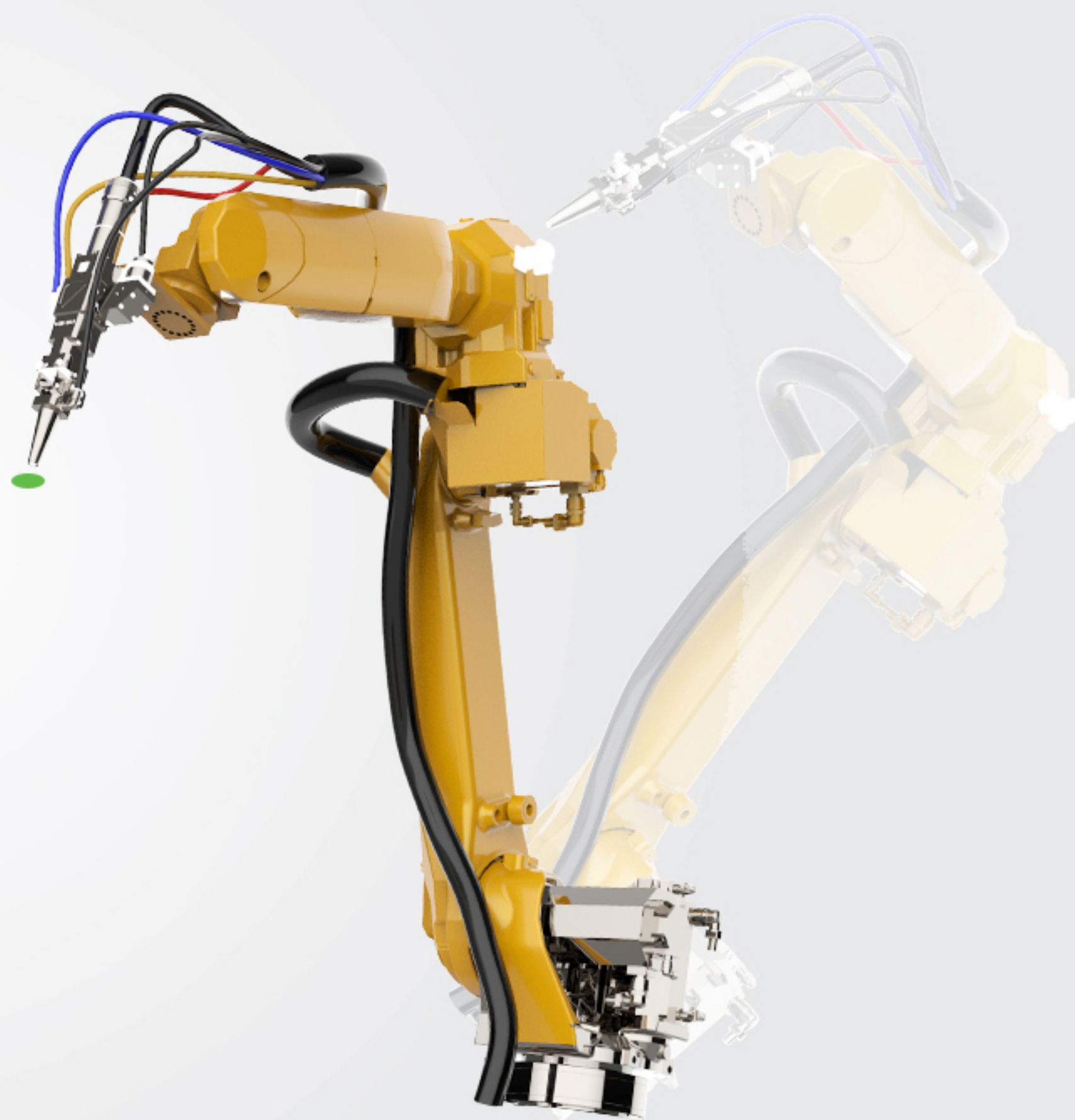
#### High efficiency

Improve workers' working conditions and reduce the requirements for workers' operating skills, increase production and increase corporate efficiency.



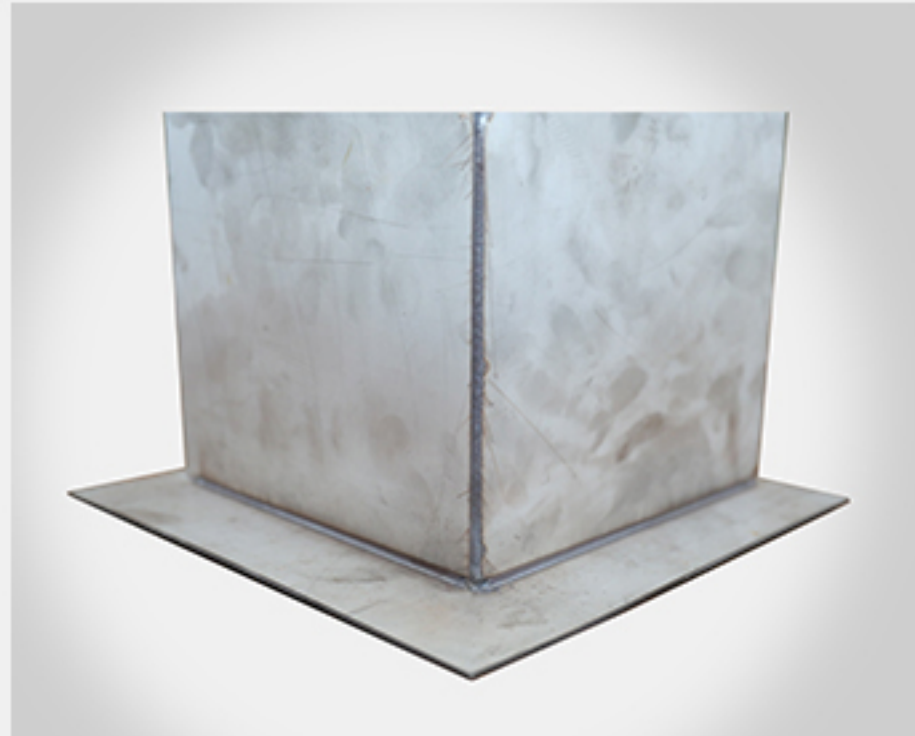
#### Multi-station available

Double-station or multi-station welding operation saves product installation fixture time and greatly improves production efficiency



### Technical Parameters

Product name	Robot fiber laser welding machine
Laser power	1000W,1500W,2000W,3000W,4000W,6000W
Welding head	WSX,Raytools,ect
Control system	FANUC
Work type	6 axis
Repeat positioning accuracy	±0.04
Welding penetration depth	0.5mm-7mm
Welding speed	≤20m/min(Depends)
Voltage	380v/50HZ/60HZ
Machine power	10KW-40KW
Welding materials	carbon steel, stainless steel, galvanized sheet, aluminum, copper, etc.
Working temperature	0℃-40℃
Type of workbench	Floor type, etc



### Industry Applications

Hardware, kitchenware, bathroom, Home appliances, sheet metal industry, agricultural machinery, automobiles and auto parts, shipbuilding, rail-transit, aerospace

JINAN G·WEIKE SCIENCE & TECHNOLOGY CO.,LTD

In hi Tech square High-Tech Zone, Jinan, Shandong, China

E-mail: wkcutt@163.com

Hotline: 400-061-521

Fax: +86-0531-88912386